

# ONEONTA BLOCK COMPANY

*Make your outdoors the Great Outdoors*







Diamond Straight Storm

# DIAMOND RETAINING WALL

Residential &  
Light Commercial

The classic Anchor Diamond block is the contractor's choice for wall construction. You can build gravity walls up to four feet high or, with geosynthetic reinforcement and professional design, Anchor Diamond walls can reach heights in excess of 30 feet.



Diamond Beveled Rawhide



Diamond Straight Desert Tan



Straight Face

Beveled Face

Step Block

Standard 10" Cap

Extra Large 13" Cap  
Available in Storm & Rawhide





Diamond Beveled Rawhide



Diamond Straight Desert Tan  
Windsor Stone Tan





Highland Stone Rawhide

# HIGHLAND STONE

## RETAINING WALL

Residential &  
Light Commercial

Combining multiple heights and sizes, the Highland Stone® retaining wall system evokes the random look of hand-stacked walls. Also crafted with exposed aggregates and rich, infused colors, a freestanding wall system completes the product line that complements the landscape.



Highland Stone Storm



Rawhide



Storm



6" Large

6" Medium

6" Small



3" Large

3" Medium

3" Small



Standard 10" Cap



Extra Large 13" Cap  
Available in Rawhide & Storm



Highland Stone Rawhide





Highland Stone Rawhide





Highland Free Standing Wall Storm

# HIGHLAND STONE

## FREE STANDING WALL

Residential &  
Light Commercial

Crafted with the same earthen appearance and multi-piece design as the Highland Stone® retaining wall system, the Highland Stone® Free Standing wall system is the perfect addition to any outdoor project.



Rawhide



Storm



Large



Medium



Small



Column



Standard 10" Cap

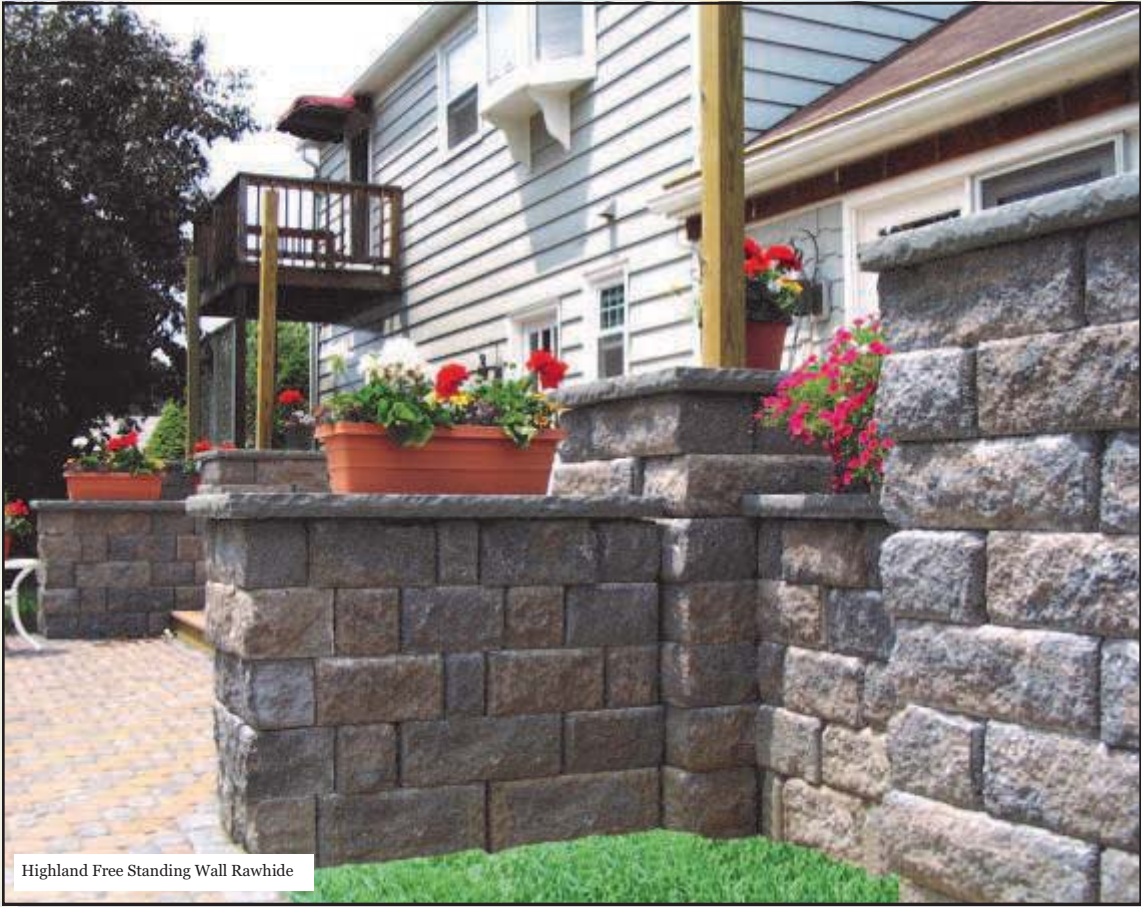


Extra Large 13" Cap  
Available in Rawhide & Storm



Highland Free Standing Wall Rawhide





Highland Free Standing Wall Rawhide



Highland Free Standing Wall Rawhide





Diamond Pro Stone Cut Rawhide

# DIAMOND PRO RETAINING WALL

Large Commercial,  
Municipal & Residential

With legendary durability, Diamond Pro® retaining walls are trusted by contractors to stand up to the toughest jobs. Diamond Pro Stone Cut® with their authentic look of weathered stone combine incredible durability with aesthetic beauty.



Standard Straight Face



Natural Gray



Desert Tan



Rawhide



Stone Cut



Rawhide



Storm



Corner Unit

Available in all  
four  
colors



Standard 10" Cap

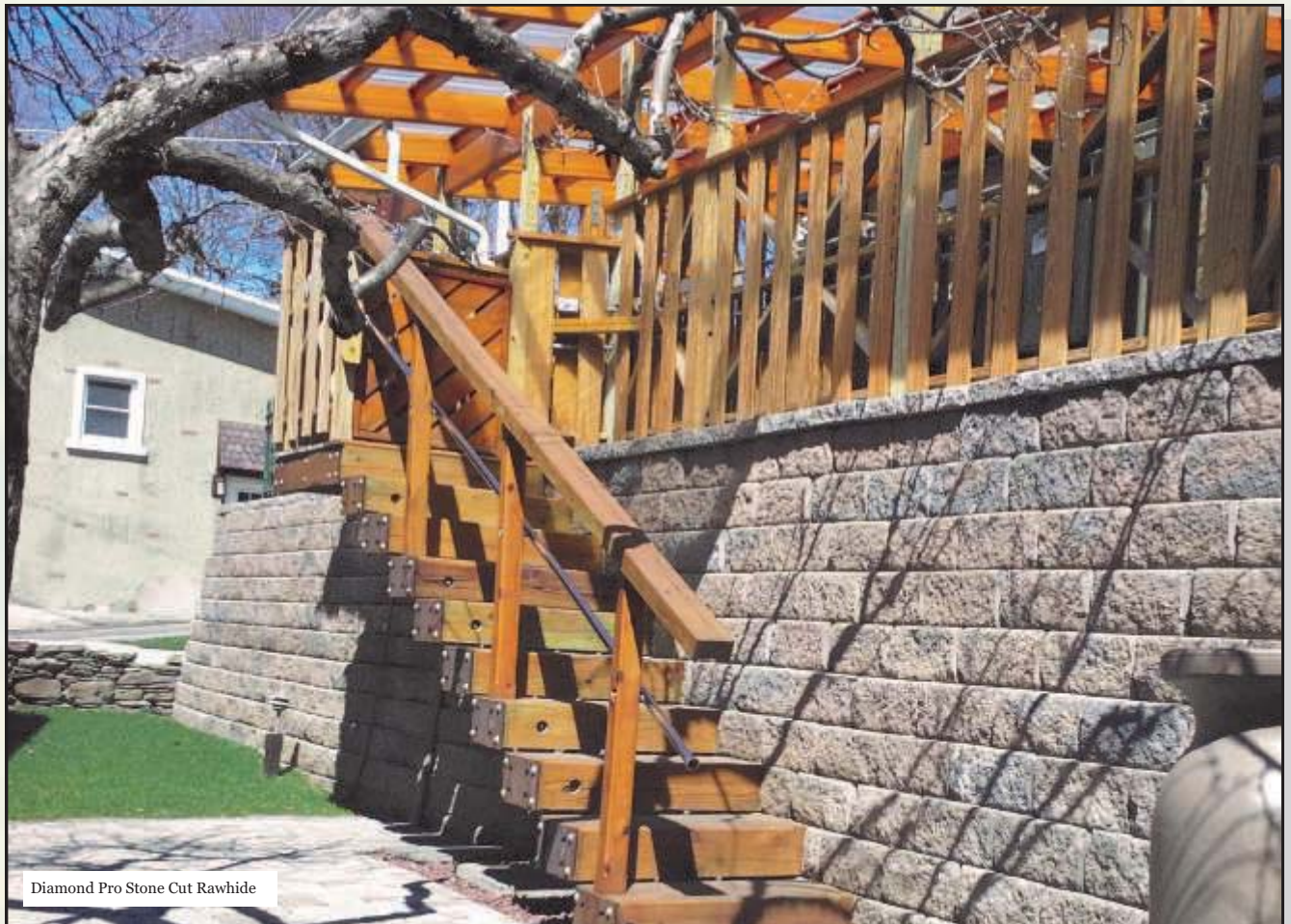


Extra Large 13" Cap  
Available in Storm & Rawhide



Diamond Pro Straight Natural









Windsor Stone Desert Tan

# WINDSOR STONE RETAINING WALL

Do It Yourself  
For walls up to 2' High



Windsor Stone Victorian Red

The traditional face style of the Windsor Stone retaining wall system gives any garden an ageless appearance.



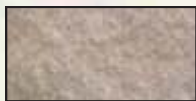
Windsor Stone



Standard 10" Cap



Natural Gray



Desert Tan



Charcoal (Windsor Stone only)



Rawhide



Victorian Red



Windsor Stone Desert Tan



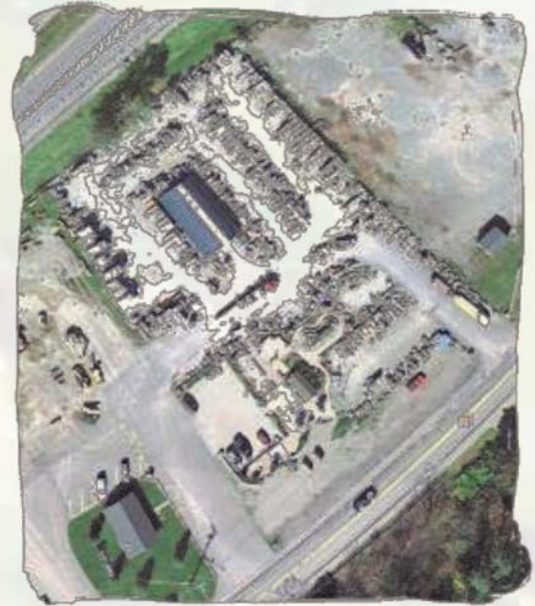
# Segmental Retaining Wall Spec Sheet

		Dimensions (height x width x depth)	Appx. Weight	Setback/ Batter	Square Foot Coverage	Minimum Inside Radius	Minimum Outside Radius	Quantity per Pallet
<b>DIAMOND</b>								
	Straight Face	6" x 17.25" x 12"	74 lbs.	1 1/8" / 10.6°	.72	8'	4'	48
	Beveled Face	6" x 16" x 12"	68 lbs.	1 1/8" / 10.6°	.67	4'	2'	48
	10" Cap Unit	Front: 3" x 17" x 10" Back: 3" x 12" x 10"	32 lbs.		Appx. 14 1/2" Linear Inches Per Cap			96
	13" Cap Unit	Front: 3" x 18" x 13" Back: 3" x 12" x 13"	44 lbs.		Appx. 15 Linear Inches Per Cap			63
	Step Block	6" x 16" x 12"	85 lbs.		.67			36
<b>HIGHLAND STONE</b>								
	6" Large	6" x 18" x 12"	73 lbs.	1 1/8" / 10.6°	.75			48
	6" Medium	6" x 12" x 12"	59 lbs.	1 1/8" / 10.6°	.50	8'	4'	Combo Pallet Includes: 48 Medium 48 Small
	6" Small	6" x 6" x 12"	30 lbs.	1 1/8" / 10.6°	.25	Using all 3 Sizes	Using all 3 Sizes	
	3" Large	3" x 18" x 12"	41 lbs.	9/16" / 10.6°	.375			
	3" Medium	3" x 12" x 12"	28 lbs.	9/16" / 10.6°	.25	8'	4'	Combo Pallet Includes: 96 Medium 96 Small
	3" Small	3" x 6" x 12"	14 Lbs.	9/16" / 10.6°	.125	Using all 3 Sizes	Using all 3 Sizes	
<b>HIGHLAND STONE FREE STANDING WALL</b>								
	6" Large	Front: 6" x 18" x 9" Back: 6" x 16" x 9"	70 lbs.	Vertical	.71			50
	6" Medium	Front: 6" x 12" x 9" Back: 6" x 10" x 9"	45 lbs.	Vertical	.46	3.75'	3.75'	Combo Pallet Includes: 48 Medium 48 Small
	6" Small	Front: 6" x 6" x 9" Back: 6" x 4" x 9"	20 lbs.	Vertical	.21	Using all 3 sizes	Using all 3 Sizes	
	Column Block	6" x 18" x 9"	75 lbs.			One Pallet of Column Block will create a 27" x 27" x 5' Column		
<b>DIAMOND PRO</b>								
	Straight Face	8" x 18" x 12"	74 lbs.	1" / 7.1°		6'	4'	48
	Stone Cut	8" x 18" x 12"	77 lbs.	1" / 7.1°	1	4'	7'	48
<b>WINDSOR STONE</b>								
		4" x 8" x 12"	25 lbs.	3/4" / 10.6°	.33	4'	2'	168





**Oneonta Block Company**  
6459 State Highway 23, Oneonta, NY 13820  
607-432-6641



**OBC Landscape & Masonry Supply**  
65 State Route 369, Port Crane, NY 13833  
607-648-7051



In the United States, Anchor Wall Systems products are sold only by licensed Anchor Wall Systems producers and are backed by a Limited Warranty. For a copy of the Anchor Wall Systems Warranty, visit your local distributor or manufacturer, or contact Anchor Wall Systems at 877-295-5415 or visit [www.anchorwall.com](http://www.anchorwall.com).

Anchor Wall Systems, Highland Stone, Diamond, and Windsor Stone are trademarks of Anchor Wall Systems, Inc.