

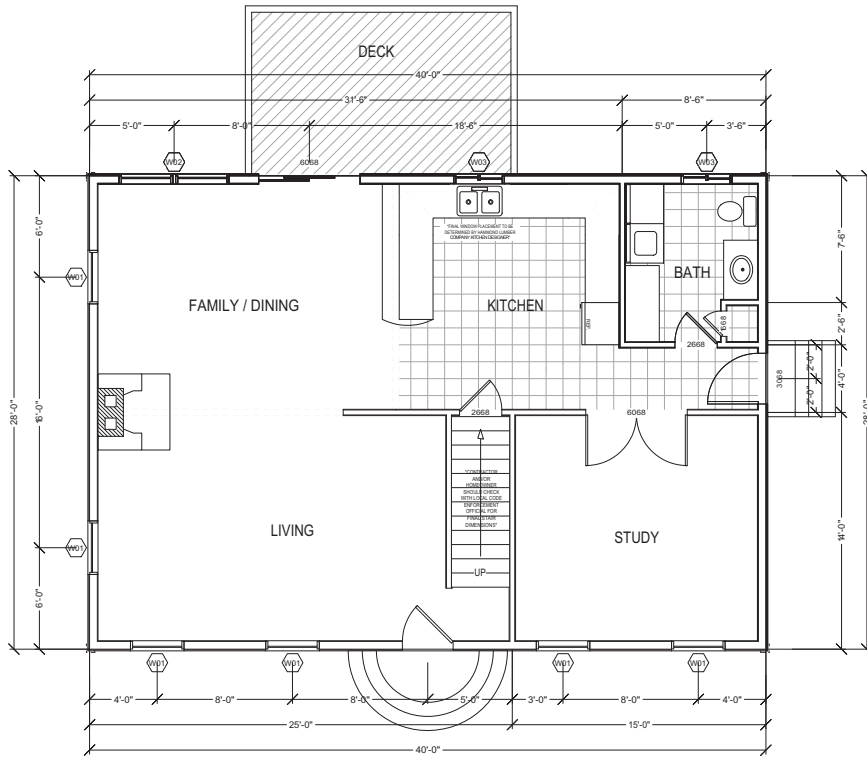


**Hammond  
Lumber Company**

28' x 40' Colonial

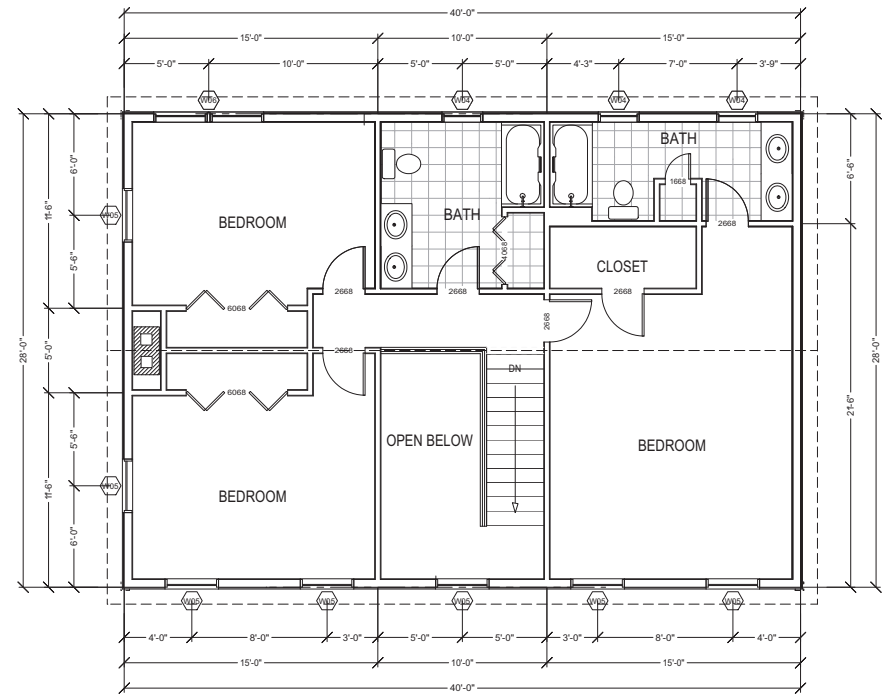
## **The Ashland**

Consists of a kitchen, dining room, living room, entry and bath on the first floor and 3 bedrooms including the master bedroom and master bathroom along with an additional bathroom on the 2nd floor and a 16'0" x 11'7" back deck.



### FIRST FLOOR

LIVING AREA  
1119 sq ft



### SECOND FLOOR

LIVING AREA  
980 sq ft

**Hammond**  
Lumber Company

**The Ashland**