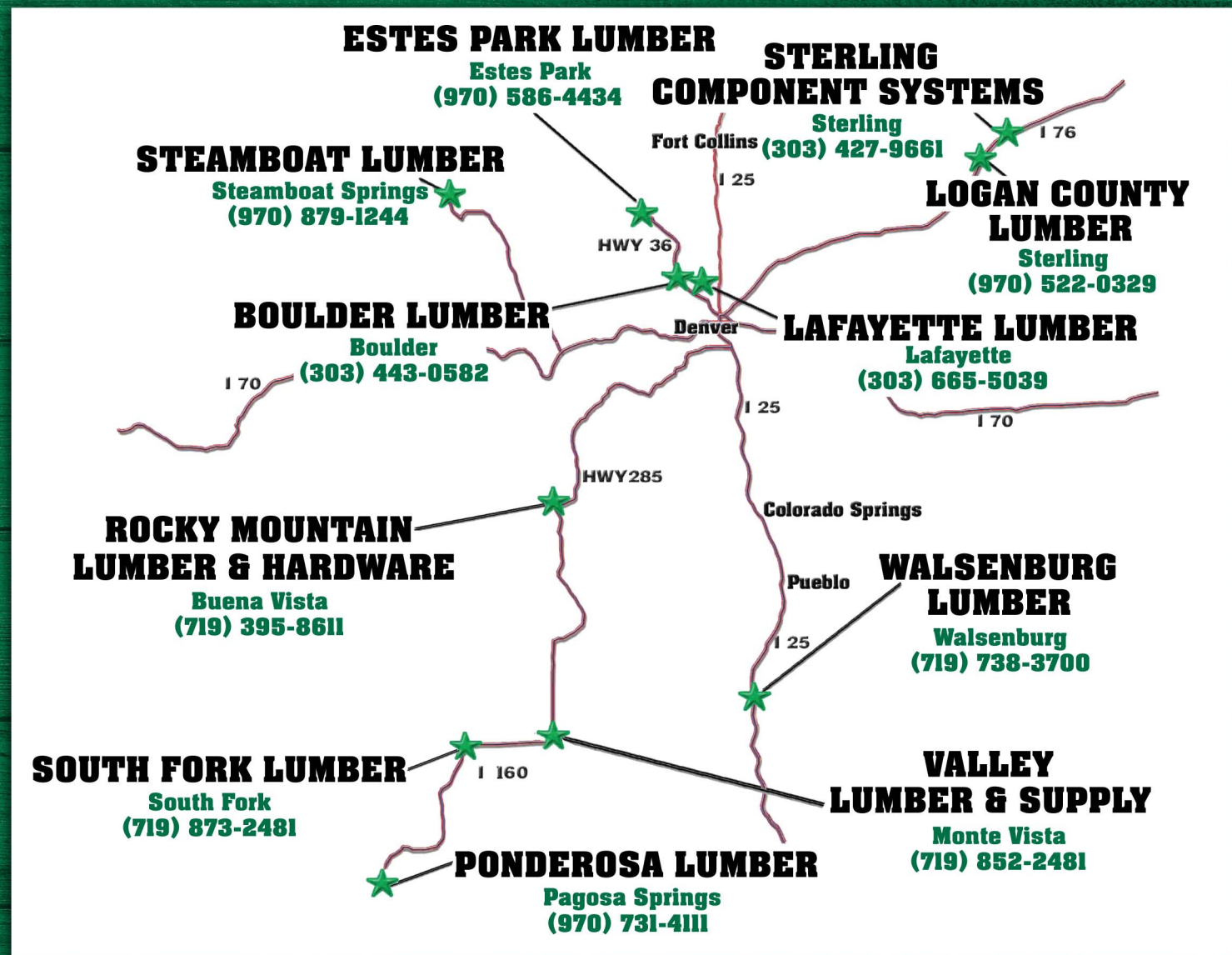


# STERLING LUMBER

Quality You Can Trust!



“Your Home Town Lumber Yard”

Sterling Lumber & Investment Company

9101 Harlan St. Suite 300  
Westminster, CO 80031  
(303) 427-9661

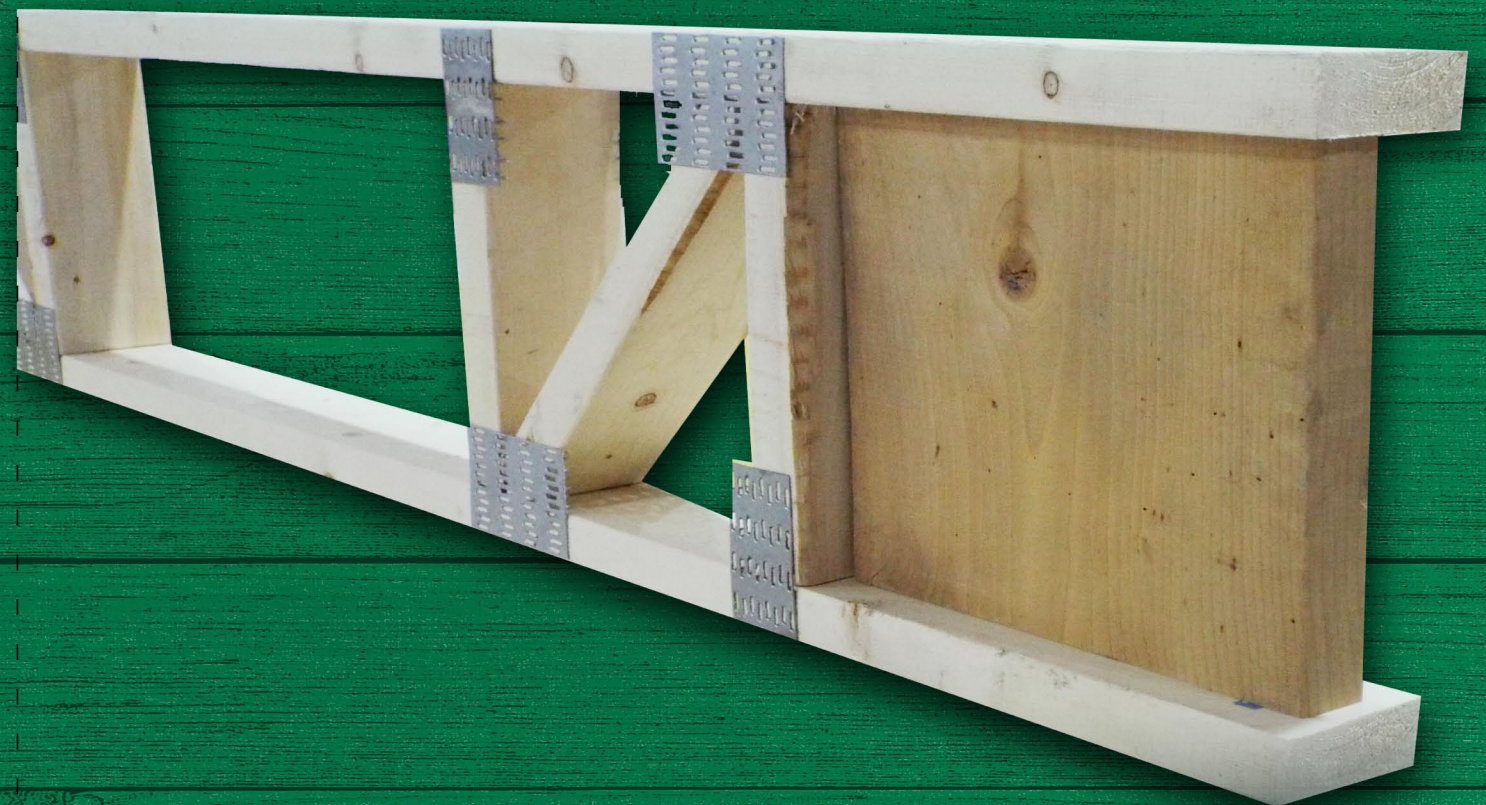
“Serving Colorado Since 1909”



**SIMPSON**

**Strong-Tie**

# STERLING COMPONENT SYSTEMS



## SCS TrueTrim Floor Truss Advantage

Sterling Component Systems

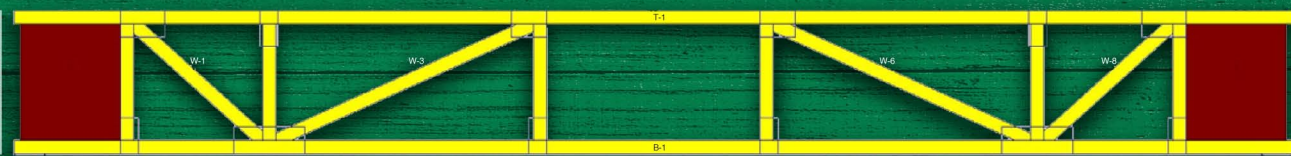
9101 Harlan St. Suite 300  
Westminster, CO 80031  
(303) 427-9661





**SEE THE TrueTrim TRUSS DESIGN  
REFERENCING THIS DETAIL  
FOR ADDITIONAL DESIGN INFORMATION**

Sterling Component Systems is now offering a trimmable floor truss! Our Trimmable Floor Truss is available in 11-7/8", 14", and 16" depths. Each end of the truss can be trimmed up to 12". These engineered floor trusses eliminate the need for dimension verification, and are readily available for floors that require an open web configuration for HVAC, Electrical, Plumbing.



**Max Span Chart**

Truss Depth	12" O.C.	16" O.C.	19.2" O.C.	24" O.C.
11-7/8"	22'-0"	22'-0"	22'-0"	20'-0"
14"	26'-0"	26'-0"	26'-0"	22'-0"
16"	28'-0"	28'-0"	26'-0"	22'-0"

**Technical Info**

1. L/360 (Live Load) and L/240 (Total Load) Vertical Deflection is code minimum on floors. All of our new product is L/480 (Live Load) and L/360 (Total Load) Vertical Deflection (or better), which is above code standards!
2. Our new product has been tested for 40psf (Live) & 15psf (Dead) loads.
3. Trusses are cambered, do not install upside down.
4. Trimmable up to 12" on each end, in the field.
5. Trusses are designed to be clear-spanned only. Do not add intermediate walls/beams, or point loads from above. Consult your salesman for a "custom" floor truss, for a specific situation like this.
6. Please see specific stamped engineering sheets from Mitek, for complete information, on any of the selected trusses that are available.

**TrueTrim Wood Web 4x2 Trimmable End Detail**

