

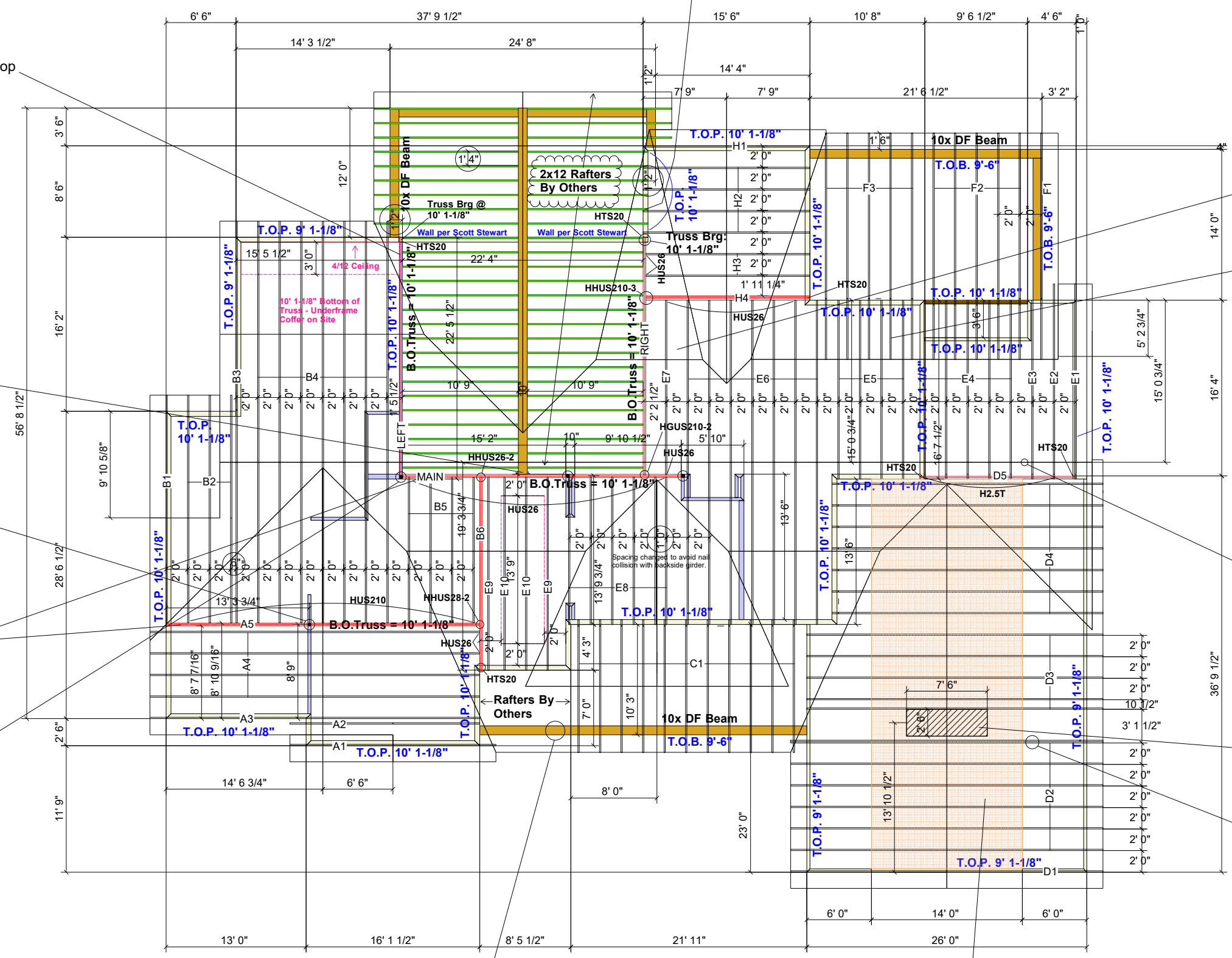
Apprx 1/2" of the top edge corner of the "LEFT" truss may protrude thru the sheeting. It is OK to bevel top chord, to the roof sheeting.

Ridge Beam and all Stick Frame connections (to girders) are per the Engineer of Record, TYP.

Girder truss brg size requirement (and uplift connections) over Pipe Columns MUST be reviewed by Engineer of Record, TYP.

A5 and MAIN girder trusses are NOT symmetrical - Do not install in reverse.

MAIN truss bears onto LEFT truss. No hanger needed. Connect together with (1) HTS20 for uplift.



Connect (1) Simpson H2.5T per each truss-to-brg-wall/beam, U.N.O.

Apprx 2/12 Pitch @ Cricket
NOTE: The girder truss labeled "RIGHT" does NOT have the cricket built into it. Purposely held low, so that cricket pitch can be perfected on site.

Post down under truss tails here @ 48" OC - Tails are creating overframe.

Top of Truss is 22' 2-1/8" from Subfloor.

Bessler Model 100 Attic Stair. Adjust truss spacing as req'd. See separate stamped D2 Truss (showing 2-PLY), stamped by Robert Brock, P.E.
Only this circled D2 truss needs to become a 2-PLY. The D3 adjacent to the Bessler 100 is rated for 24" OC which covers that side.

Trusses will have 10-1/8" heel height. Match rafters to trusses.

Shaded Area: 14' Wide Attic Platform inside Attic Truss.

REVISED: 1/21/20