

Truss held back 2-1/4" for sheathing and LVL ledger by others. E.O.R to verify ledger.

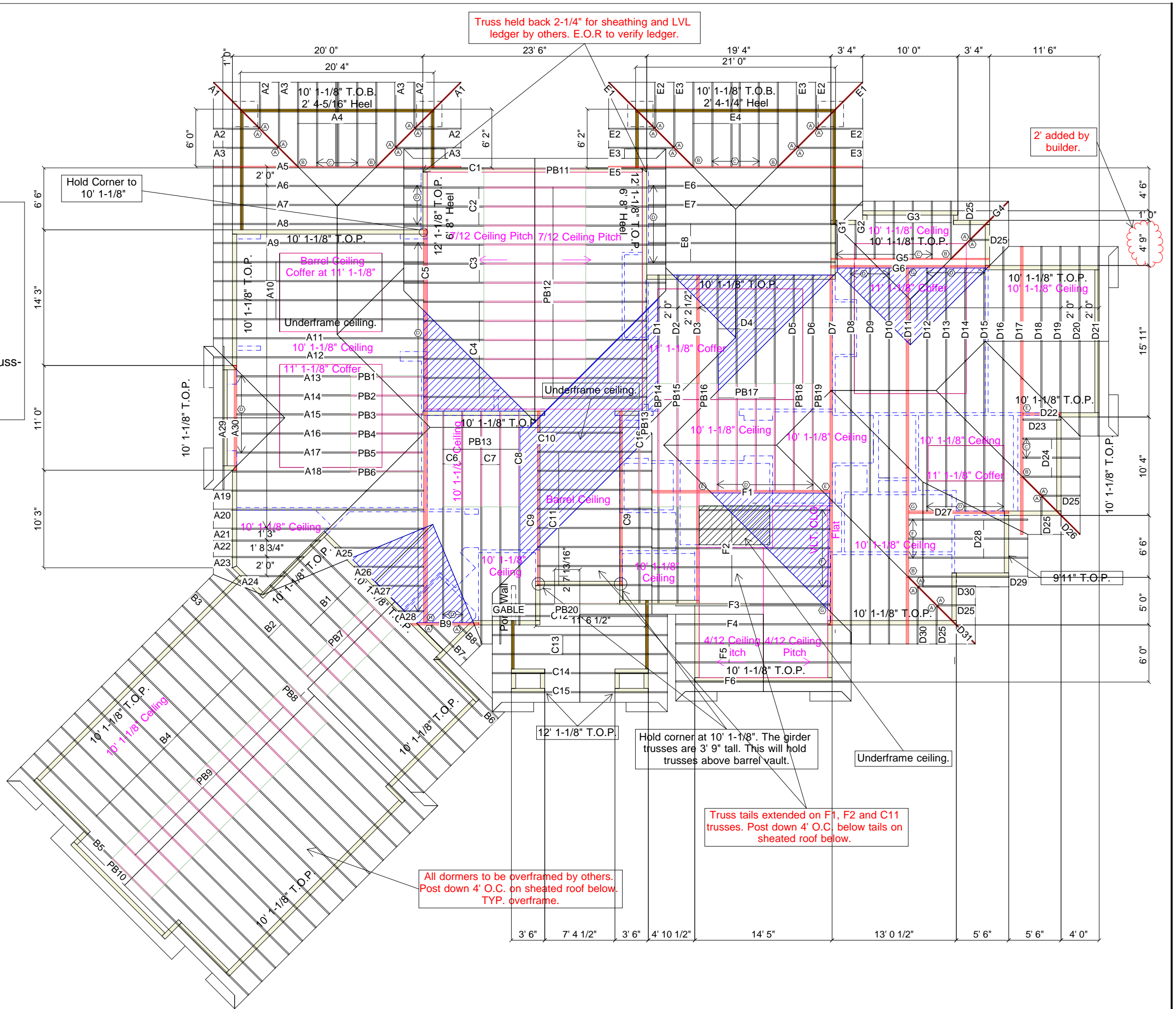
2' added by builder.

Hold Corner to 10' 1-1/8"

Connection Schedule

- A = TJC57
- B = HJC26
- C = Lus26
- D = HUS26
- E = HGUS28-2
- F = LUS28
- G = HHUS28-2
- H = HGUS28-4

Attach (1) Simpson H2.5T per each truss-to-brg-wall/beam. U.N.O



All dormers to be overframed by others. Post down 4' O.C. on sheated roof below. TYP. overframe.

Hold corner at 10' 1-1/8". The girder trusses are 3' 9" tall. This will hold trusses above barrel vault.

Truss tails extended on F1, F2 and C11 trusses. Post down 4' O.C. below tails on sheated roof below.

Underframe ceiling.